

The Collections Project with Flinders University Museum of Art

After the Fall

The theme *After the Fall* references the biblical story where Adam and Eve are banished from the Garden of Eden and humanity becomes corrupted by sin.

A selection of European prints from Flinders University Museum of Art's (FUMA) collection are visual representations of chaos, depravity, and civilisations in ruins, and the human suffering that results from war, vices and corruption.

Explored in a contemporary context these ideas could relate to our current climate catastrophe, global pandemic and refugee crises. *After the Fall* could also refer to the posthuman age, and a reimagining of new ways of life on earth and in space.

Artists involved in the project will use the historical prints, and their mythologies, symbols and techniques as a beginning point for a new body of work. By viewing and researching key works from the print collection over a series of visits to FUMA, artists will draw out connections that resonate with their practices and develop works in response to the collection.



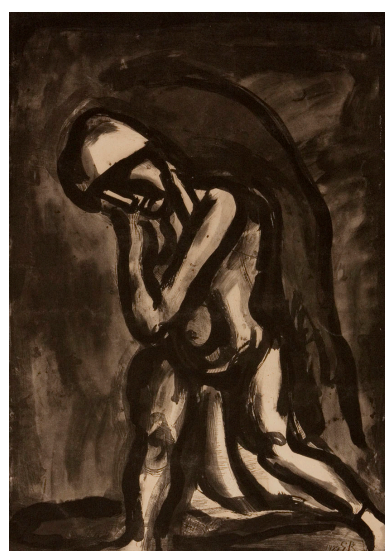
John Martin (1789-1854), *Adam and Eve driven out of Paradise* from John Milton's *Illustrations to Paradise Lost*, published by Septimus Prowett, 1827, mezzotint, etching and drypoint, ink on paper, 13.8 x 20.7 cm (image), Collection of Flinders University Museum of Art 182.



Giovanni Battista Piranesi (1720-1778) *View of the Temple of Antoninus and Faustina in the Roman Forum* from the series *Vedute di Roma* (Views of Rome), c.1748-1760, etching, ink on paper, 40.8 x 54.8 cm (plate), Collection of Flinders University Museum of Art 129.



Francisco Goya (1746-1828), *Furious folly* (*Disparate furioso*), plate 6 from *Los Disparates* (*The Follies*), 1816-24, published 1864, etching and aquatint, ink on paper, 25.0 x 36.5 cm (plate), Collection of Flinders University Museum of Art 77.



Georges Rouault (1878-1968), *Winter, leper of the Earth*, plate 24 from *Miserere et Guerre*, 1922 (published 1948), aquatint, roulette, drypoint over heliogravure, ink on paper, 51.7 x 36.7 cm (plate), Collection of Flinders University Museum of Art 102.