

# Expression of Interest (EOI) PROJECT BRIEF

## Aboriginal and Torres Strait Islander Artists Multiple Opportunities for Flinders Medical Centre, Adelaide

Artists of all experience levels and practice types are encouraged to apply - **no previous public art experienced required**. Guildhouse will offer artists 1:1 support throughout the process.

There are **EIGHT** artwork opportunities available within this EOI.

- Two opportunities are for Kaurna artists
- Six opportunities are for all Aboriginal and Torres Strait Islander artists

All opportunities are open to Guildhouse Members and Non-Members Australia wide.



Cedric Varcoe (Ngarrindjeri/Narangga), *Kaurna Wirtu Tida*, 2022, University of Adelaide, delivered by Guildhouse

<b>Contents</b>	Introduction	2
	Background and Location	3
	Building Design	4
	The Works of Art	5
	Important Note	5
	Budget	6
	Proposed Timeline	7
	How to Apply	7
	What happens after I submit my EOI application?	8
	Contact	9
	Guildhouse – who we are	9

## Introduction

Guildhouse, working with the Southern Adelaide Local Health Network (SALHN) and ARM Architecture, invites Aboriginal and Torres Strait Islander visual artists to submit an Expression of Interest (EOI) for artwork designs to be commissioned for Flinders Medical Centre. The artworks will be integrated into the design of the new seven-storey medical facility in Bedford Park, South Australia.

There are eight (8) artwork opportunities in total:

1. One artwork design for integration into the entry and lobby ceiling (Kaurna artists only)
2. A pair of artwork designs for integration into lift lobbies on Levels 1 & 2 (Kaurna artists only)
3. Level 1- one artwork design for integration into several areas (Open to all First Nations artists)
4. Level 2- one artwork design for integration into several areas (Open to all First Nations artists)
5. Level 4- one artwork design for integration into several areas (Open to all First Nations artists)
6. Level 5- one artwork design for integration into several areas (Open to all First Nations artists)
7. Level 6- one artwork design for integration into several areas (Open to all First Nations artists)
8. Level 7- one artwork design for integration into several areas (Open to all First Nations artists)

All artwork mediums are welcome, including (but not limited to) paint, pencil, printmaking, digital design, photography, and weaving. For each of the eight artwork opportunities, two/three artists will be shortlisted and paid to create designs during a Concept Design period. The chosen designs, whether originally digital or digitised from physical works, will be enlarged, manipulated to fit within the intended areas (with input and approval from the artists) and integrated throughout the building in locations such as ceiling panels, staff stations, corridors and lift foyers.



Above: Concept render by ARM Architecture of the new building

This EOI aims to create a diverse pool of interested artists. The exact artwork locations are still being finalised, and further details will be shared in an Artist Brief for each opportunity. This project brief aims to give an overview to help artists decide if they would like to apply to be a part of this project.

This is a unique opportunity for artists to gain valuable experience in public art, including developing a Concept Design and, if selected, progressing to a Detail Design. It offers emerging and mid-career artists a chance to build new skills while providing established artists an opportunity to explore new directions in their practice.

## Background and Location

The Flinders Medical Centre Redevelopment is situated close to Warriparinga, a Kaurna ceremonial meeting place and environmentally significant site on the Sturt River.

Warriparinga is a significant site in the complex and multi-layered Dreaming of the Kaurna ancestor, Tjilbruke. For the Kaurna nation, Tjilbruke was a keeper of the fire and a peace maker/law maker. Tjilbruke is part of the living culture and traditions of the Kaurna people. His spirit lives in the Land and Waters, in the Kaurna people and in the glossy ibis (known as Tjilbruke for the Kaurna). Through Tjilbruke, the Kaurna people continue their creative relationship with their Country, its spirituality and its stories.<sup>1</sup>

Some of the design elements for the centre have been influenced by Warriparinga in consultation with Kaurna Yerta Aboriginal Corporation (KYAC) and the project's Aboriginal Stakeholder Reference Group (ASRG).

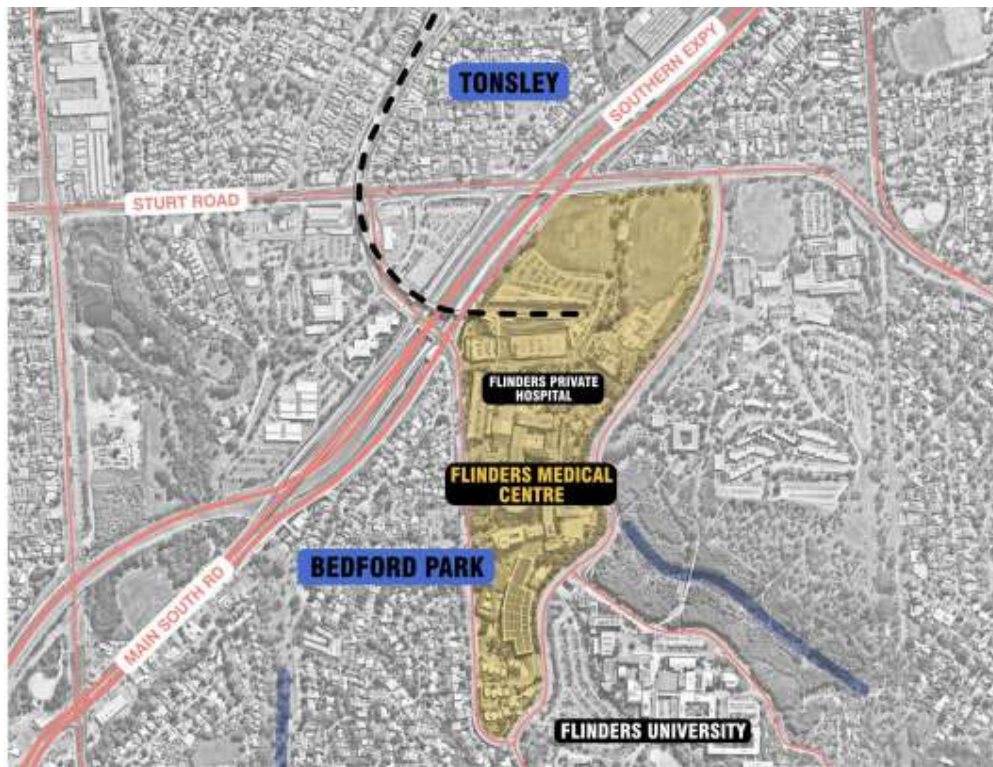
Nearby Warriparinga, the new building will form a part of the Flinders Medical Centre Redevelopment, situated in front of the existing Flinders Medical Centre main entrance. Flinders Medical Centre (FMC) forms a part of the Southern Adelaide Local Health Network (SALHN) and is the southern area's largest hospital and provides medical services for people living in the southern metropolitan area of Adelaide.

The hospital is co-located with the existing Flinders University School of Medicine and Flinders Private Hospital. The hospital opened in 1976 and serves as the trauma centre for the southern suburbs, and parts of the Adelaide Hills. It is one of two major trauma centres in the state with around-the-clock emergency retrieval service bringing patients to the hospital by road or helicopter.

---

<sup>1</sup> [https://www.flinders.edu.au/reconciliation-action-plan - :~:text=Flinders University](https://www.flinders.edu.au/reconciliation-action-plan-%3A~:text=Flinders University)

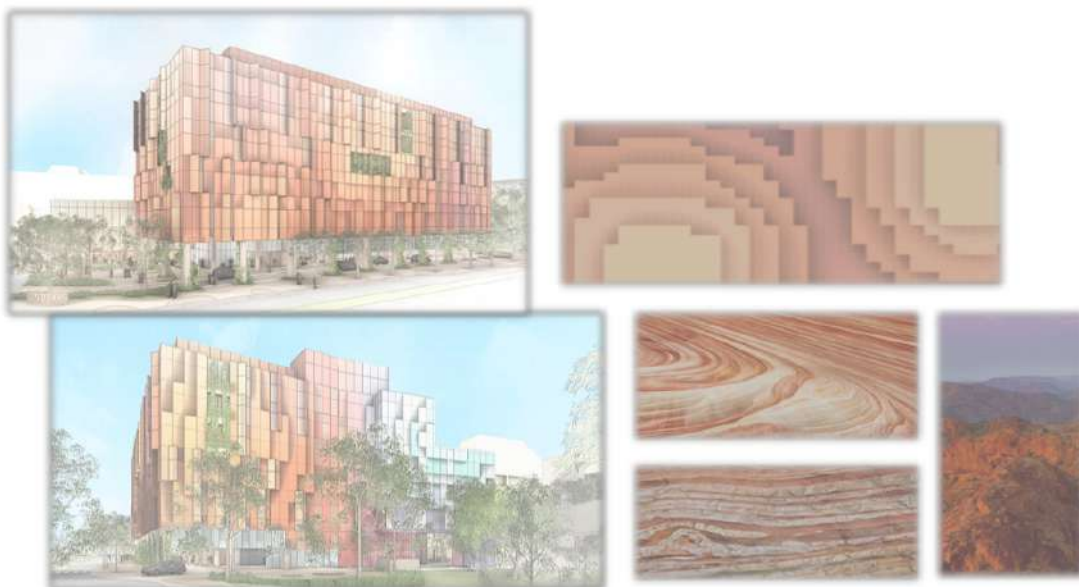




Above: Location Map of Flinders Medical Centre

## Building Design







The following images are designed to give artists a sense of the building and the themes that have informed its design.



Above: Geological forms and colours of Adelaide used across the building. Render by ARM Architecture



Above: Themes and corresponding colours used up the building on the various levels. Render by ARM Architecture

THEME	COLOUR PALETTE	
SKY		LIGHT BLUE
ROCK		OCHRE
CANOPY		DARK GREEN
GRASSLANDS		AMBER
CREEK		DARK BLUE
'TILLITE' GLACIAL ROCK		GOLD
CREEK BED		SAND



Above: Interior themes and colours beginning with the creek bed at ground level. Render by ARM Architecture



## The Works of Art

Further information will be available in individual ARTIST BRIEFS for each of the eight projects. these will be issued to the artists shortlisted from this Expression of Interest stage.

- All of the opportunities will be for small – medium sized artworks supplied in digital format to be scaled up by ARM Architecture and integrated into various aspects of the interior which may include ceilings, lift lobbies, clinical areas, staff stations.
- The artwork design can be created in mediums such as (but not limited to) paint, pencil, printmaking, digital design, photography, etc.
- Other mediums could also be considered such as weaving, providing the item can be photographed/scanned to create a high-resolution digital file for up-scaling and printing onto surfaces such as acoustic panels or wall vinyl.

## Important Note...

Part of the requirements of this opportunity is that the artwork designs may be modified by ARM Architecture (in discussion with the artists to ensure respectful cropping or changes) to comply with clinical settings and the building design requirements. This will likely be a combination of tonal and colour adjustments (making the artwork lighter/darker or half tone, lining up colours with the theme for each floor), and specific sections of the final design being cropped/used.



Above: Concept render by ARM Architecture of the new building.

## Budgets

Artwork Opportunity	Description	Concept Design Budget	Commission Budget for the Selected Artist
<b>Entrance and lobby ceiling design</b> (Kaurna artist only)	Artwork design integrated into main entrance and lobby ceiling.	Three artists engaged for Concept Design - <b>\$2,000</b> per artist.	<b>\$20,000</b> , includes licencing, artist fees and flatbed photography if required
<b>Lift lobbies 1 &amp; 2</b> (Kaurna artist only)	A pair of artworks incorporated into the lift areas.	Two artists engaged for Concept Design - <b>\$2,000</b> per artist.	<b>\$10,000</b> , includes licencing, artist fees and flatbed photography if required
<b>Level 1 artwork</b> (Open to all First Nations artists)	Artwork integrated into staff stations, corridors and key junctions	Two artists engaged for Concept Design - <b>\$2,000</b> per artist.	<b>\$10,000</b> , includes licencing, artist fees and flatbed photography if required
<b>Level 2 artwork</b> (Open to all First Nations artists)	Artwork integrated into staff stations, corridors and key junctions	Two artists engaged for Concept Design - <b>\$2,000</b> per artist.	<b>\$10,000</b> , includes licencing, artist fees and flatbed photography if required
<b>Level 4 artwork</b> (Open to all First Nations artists)	Artwork integrated into staff stations, corridors and key junctions	Two artists engaged for Concept Design - <b>\$2,000</b> per artist.	<b>\$10,000</b> , includes licencing, artist fees and flatbed photography if required
<b>Level 5 artwork</b> (Open to all First Nations artists)	Artwork integrated into staff stations, corridors and key junctions	Two artists engaged for Concept Design - <b>\$2,000</b> per artist.	<b>\$10,000</b> , includes licencing, artist fees and flatbed photography if required
<b>Level 6 artwork</b> (Open to all First Nations artists)	Artwork integrated into staff stations, corridors and key junctions	Two artists engaged for Concept Design - <b>\$2,000</b> per artist.	<b>\$10,000</b> , includes licencing, artist fees and flatbed photography if required
<b>Level 7 artwork</b> (Open to all First Nations artists)	Artwork integrated into staff stations, corridors and key junctions	Two artists engaged for Concept Design - <b>\$2,000</b> per artist.	<b>\$10,000</b> , includes licencing, artist fees and flatbed photography if required

Please note commissioning fees are based on [NAVA rates](#). The budget has been confirmed for each opportunity as outlined above.

Fees associated with the following will be covered by an additional budget managed by Guildhouse and/or ARM Architecture:

- Vinyl, printing and installation
- Any other fees associated with the printing/integration of artworks



## Timeline

Deliverable	From	To
EOI Call Out (current)	20 Jan	17 Mar, 9am
Assessment of all EOI submissions, artist selection for Concept Design	18 Mar	14 Apr
Guildhouse contracts artists for Concept Design phase	14 Apr	28 Apr
Concept Design phase	29 Apr	29 July
Site visits, briefings and Q&A; 1:1 support (throughout). For artists located interstate/ unable to attend the site visit an online/ phone meeting will be organised.	1 May	31 May
Consultation where appropriate	May	July
Artists give Concept Design Presentations	Mid July	Late July
Concept Selected and feedback provided	Late July	Early Aug
Detailed Design		
Further edits to Concept Design based on feedback, if required	Early Aug	Late Aug
Final Artwork Submission in Digital Format	Early Aug	End Aug

## How to Apply

Artists are required to submit the following to register their interest in this project:

1. Complete the application form online.
2. Upload an artist CV (max 2 pages)  
OR  
an artistic biography (max 1 page).
3. Upload Images – no more than 10 images of previous artworks that reflect your practice.  
Please format into one PDF (max 10MB).

If you have not previously written a CV or Bio, please check out [Guildhouse's Artist Toolkits](#) to see what to include.

Please be aware that our application form does not save your progress. Be ready with your documents to upload and hit submit.

[APPLY NOW VIA THE ONLINE FORM](#)

## What happens after I submit an EOI?

### Artist Selection, Artist Brief and Concept Design

Artists will be shortlisted from the Expression of Interest submissions by a selection panel made up of Flinders Medical Centre Redevelopment project stakeholders, members of the Southern Redevelopment Aboriginal Stakeholder Reference Group, and a Guildhouse representative.

Once the details for each of the eight (8) opportunities have been confirmed, Guildhouse will write an Artist Brief for each artwork (an Artist Brief is a document that will fully explain the details of each artwork opportunity and requirements such as possible themes, considerations, placement, budget, timeline for artwork creation, and details of how the artwork will be upscaled and integrated into the building etc).

The Artist Briefs will be shared with shortlisted artists who will be invited, briefed and contracted to go on to Concept Design stage (paid opportunity).

The artists will each develop their ideas (Concept Design) based on the requirements of the Artist Briefs. Guildhouse will be available to support artists throughout the Concept Design process. The artists will then present their Concept Designs to the Art Selection Panel, with **one** Concept Design/artist being selected for **each** of the eight artwork opportunities.

### Detailed Design

Following the Concept Design selection process, the successful artists will go on to Detail Design stage. Detail Design is where the artists further develop and finalise their Concept Designs to outline exactly what the artwork is/will look like. The artists will work with Guildhouse and ARM Architecture in preparing the designs for file handover.

The process of putting together a Concept and Detailed Design for public art may be unfamiliar. With Guildhouse's support, the artists will be guided through the process where they need it e.g. research, reading site plans and drawings, an introduction to how an artwork goes from paper/paint/a digital design etc to being integrated into the building, timelines and budgets, and how to then combine it all into a professional Concept Design package. Guildhouse will provide 1:1 support and skills development for every artist involved in this project.

If you have any questions about this Expression of Interest or the public art commissioning process, please reach out to the Guildhouse team.

## Contact

Tracy Le Cornu, Curator, Guildhouse Project Lead  
0434 460 613  
[tracy.lecornu@guildhouse.org.au](mailto:tracy.lecornu@guildhouse.org.au)

Sian Watson, Producer, Guildhouse Project Assistant  
(08) 8410 1822  
[sian.watson@guildhouse.org.au](mailto:sian.watson@guildhouse.org.au)

## **Guildhouse: who we are**

Guildhouse is a not-for-profit peak industry body for the visual arts sector in South Australia that has contributed to a vibrant artistic community for sixty years. Trusted for its in-depth understanding of visual arts practice, sector knowledge, professional networks and its experienced team, and with a directory of 1,200+ members from diverse artistic practices, Guildhouse is uniquely qualified to connect South Australian artists, designers and craftspeople with private, public, and commercial opportunities.

In addition to working with established artists, Guildhouse provides skills development and hands on experience for emerging creative practitioners with little or no experience in public art, enabling artists to navigate the often-complex public art journey in a supported, informed and safe way. In turn, our partners play a pivotal part in a broad creative ecosystem that supports skills development and the growth of a diverse and experienced pool of artists, leading to the enrichment of public art across South Australia.

*All Flinders Medical Centre opportunities are open to Guildhouse Members and Non-Members Australia-wide. Stay informed about upcoming opportunities by joining as a Guildhouse member.*

*Guildhouse membership offers access to professional support, services and discounted specialist insurance for artists, craft practitioners and designers. By becoming a member, you help us continue our advocacy and support for Australian creative practitioners.*

## Ngaityalya